

BATCH CHARGER EME-NEND®- VL/VR

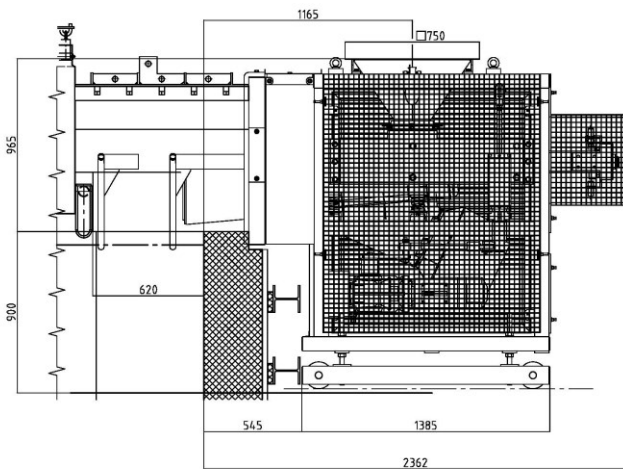
EME GmbH

Wockerather Weg 45
41812 Erkelenz
www.eme.de

Telefon: +49 2431 9618 0
Fax: +49 2431 74687
<mailto:contact@eme.de>

Stoltestraße 23
97816 Lohr am Main
www.eme.de

Telefon: +49 9352 507 500
Fax: +49 9352 507 193
<mailto:contact@eme.de>



EME-NEND® - VL/VR

The EME NEND® series has been extended with the introduction of a new version with a vibratory tube. This batch charger can be used both on a standard doghouse and on an IRD doghouse.

Due to the modular design, melt capacities up to 500 t / d (2x250 t / d) on two machines, next to each other (VL and VR) can be achieved. The machines allows for a completely sealed doghouse. Immediately after insertion of the batch the Pusher shapes clusters, which are then pushed forward with a linear movement into the melting area of the furnace. On an interruption the pusher stops in front of the opening of the vibratory tube and reduces the introduction of heat into the vibratory tube.

The opportunity to adjust the conveying capacity of the vibratory tube and the frequency of the pusher allows optimization of the batch distribution on the glass surface.

ADVANTAGES AT A GLANCE :

- **Completely sealed Doghouse**
- **No uncontrolled entry of unwanted air into the furnace**
- **Considerably less dust formation due to the closed conveying tube**
- **Optimal batch distribution in the glass melting area**
- **Quick and easy exchange of the pusher front part and the conveying tube**
- **Reduced weight**
- **Modular design; „maintenance of one machine while the other continues,,**
- **Low wear on parts**

* Batch density of 1,35 kg/dm³ and melting loss of 18%.
cullet size < 30 mm
Batch moisture max. 3 %.

TECHNICAL DATA – EME-NEND® -VL200 / VR200

Capacity (cullet 0% .. 80% *)	85 t/d .. 100 t/d
Conveying pipe capacity	0,25 kW
Pusher capacity	1,1 kW
Cooling water consumption	15 ... 20 l/min
Cooling water temperature	20 °C ... 60 °C
Weight	ca. 1.000 kg
Dimensions	LxWxH ca. 2.550 x 1.100 x 1.860 mm

TECHNICAL DATA – EME-NEND® -VL300 / VR300

Capacity (cullet 0% .. 80% *)	125 t/d .. 150 t/d
Conveying pipe capacity	0,125 kW
Pusher capacity	1,1 kW
Cooling water consumption	15 ... 20 l/min
Cooling water temperature	20 °C ... 60 °C
Weight	ca. 1.000 kg
Dimensions	LxWxH ca. 2.550 x 1.350 x 2.000 mm

TECHNICAL DATA – EME-NEND® -VL400 / VR400

Capacity (cullet 0% .. 80% *)	210 t/d .. 250 t/d
Conveying pipe capacity	0,5 kW
Pusher capacity	1,1 kW
Cooling water consumption	15 ... 20 l/min
Cooling water temperature	20 °C ... 60 °C
Weight	ca. 1.500 kg
Dimensions	LxWxH ca. 2.550 x 1.550 x 2.140 mm