



SECONDARY CRUSHER

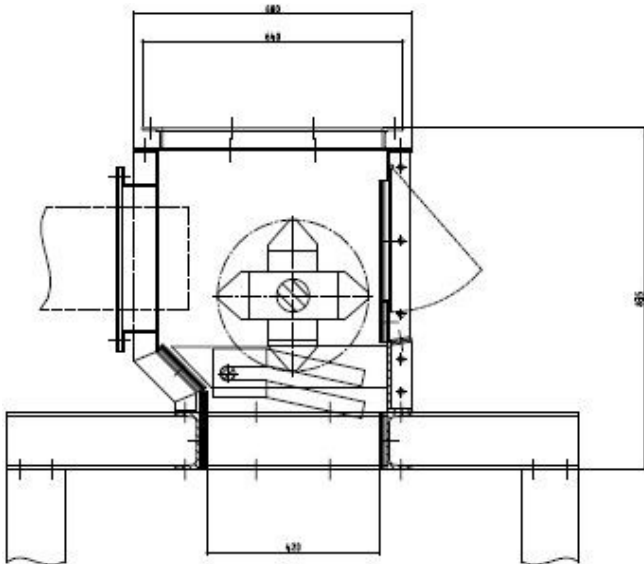
EME GmbH

Wockerather Weg 45
41812 Erkelenz
www.eme.de

Telefon: +49 2431 9618 0
Fax: +49 2431 74687
contact@eme.de

Stoltestraße 23
97816 Lohr am Main
www.eme.de

Telefon: +49 9352 507 500
Fax: +49 9352 507 193
contact@eme.de



Secondary Crusher for Flat Glass

The secondary crusher is mainly used for secondary crushing of glass edges. In addition, it is also used as a primary edge crusher. For this purpose, the edge cuts are conveyed laterally to the crusher by means of several vibratory chutes arranged in a cascade-like manner. The impact heads are manufactured of special chill casting and contain only traces of nickel.

Vertical charging is also possible.

For container glass crushing, the crusher can also be used as primary crusher.

OVERVIEW OF CHARACTERISTICS:

- **Use as Edge Crusher or Secondary Crusher for Flat Glass**
- **Primary Crusher for Container Glass**
- **Compact Construction**
- **Low Space Requirement**
- **Low Cost Alternative to the Edge Crusher**

TECHNICAL DATA – SECONDARY CRUSHER

<u>Inner width:</u>	<u>880 mm</u>
<u>Glass thickness:</u>	<u>1 – 20 mm</u>
<u>Driving capacity:</u>	<u>up to 7,5 kW</u>
<u>Output:</u>	<u>max. 30 t/h</u>
<u>Glass width after crushing:</u>	<u>appr. 50 mm</u>
<u>Rotor type:</u>	<u>impact head</u>