

# glass WORLDWIDE

Latest technology + exclusive interviews with Dekorglass, Diageo, HEINZ-GLAS, Saint-Gobain & Stoelzle. Hot Topics & Virtual Marketplace: [glassworldwide.co.uk](http://glassworldwide.co.uk)



PARTNERSHIP.  
IT'S IN OUR DNA.

FIND OUT MORE AT [EME.DE](http://EME.DE)

# Revolutionising batch house software

As a supplier of batch preparation plants, cullet handling equipment and batch charging technology, EME provides custom-designed and efficient solutions for almost all types of glass, from float glass and containers to fibres and tableware. Roger Knüttel looks at the latest updates to the company's batch house software.

Recently EME introduced WinCC Unified to its BatchSystem, a completely web-based system to revolutionise batch house software architecture. Combining the Siemens TIA Portal V17 with WinCC Unified means that the EME BatchSystem is now browser-based and can now be used without any local installation or hardware. The system can also be accessed via tablets, smartphones and desktop computers with any existing operating system. This makes it more accessible whilst also allowing direct access to control hardware and high-performance databases.

## Ensuring a smooth transition with WinCC Unified

As well as a user-friendly interface and modern design, simple navigation enables existing EME customers to migrate their old EME system without learning everything from scratch. For the batch house operator, it provides a smooth transition to an upgraded system.

The new EME BatchSystem reflects the EME core philosophy: sophisticated software and system architecture; well-proven concept for migration from the existing control system to the new solution; strict modularisation and standardisation; fully modular and based on proven standard building blocks; developed completely in-house; all hardware components are easily available on the open market; no use of proprietary equipment for weighing; customers can rely on a technically mature and well-proven design.

## EME BatchSystem advances

The EME BatchSystem is a universal, independent batch system fully integrated in WinCC Unified, as well as in PCS7, S7 and Rockwell. It is operable via any standard internet browser, such as Google Chrome, Firefox, IE and others.

This batch application includes:

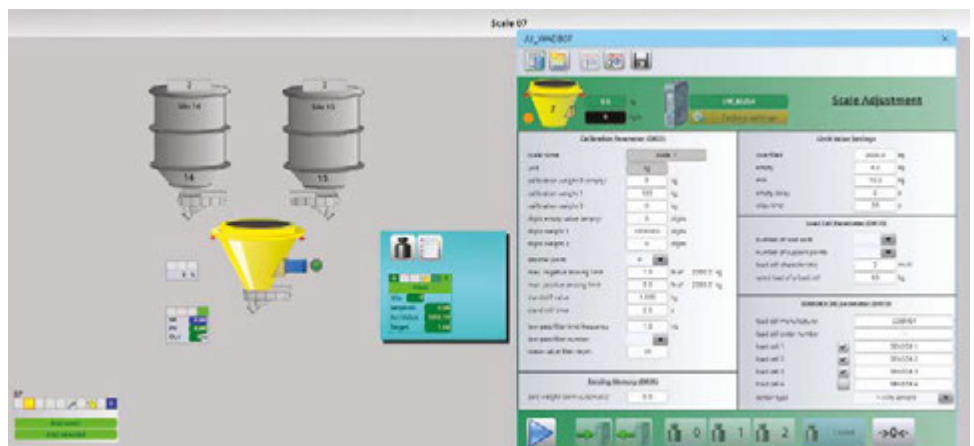
- Co-ordination of the production process via the recipe settings
  - High performance batching
  - Route control
- Production data management
  - Recipe management (MS SQL Server or MS Access) ▶



Start screen.



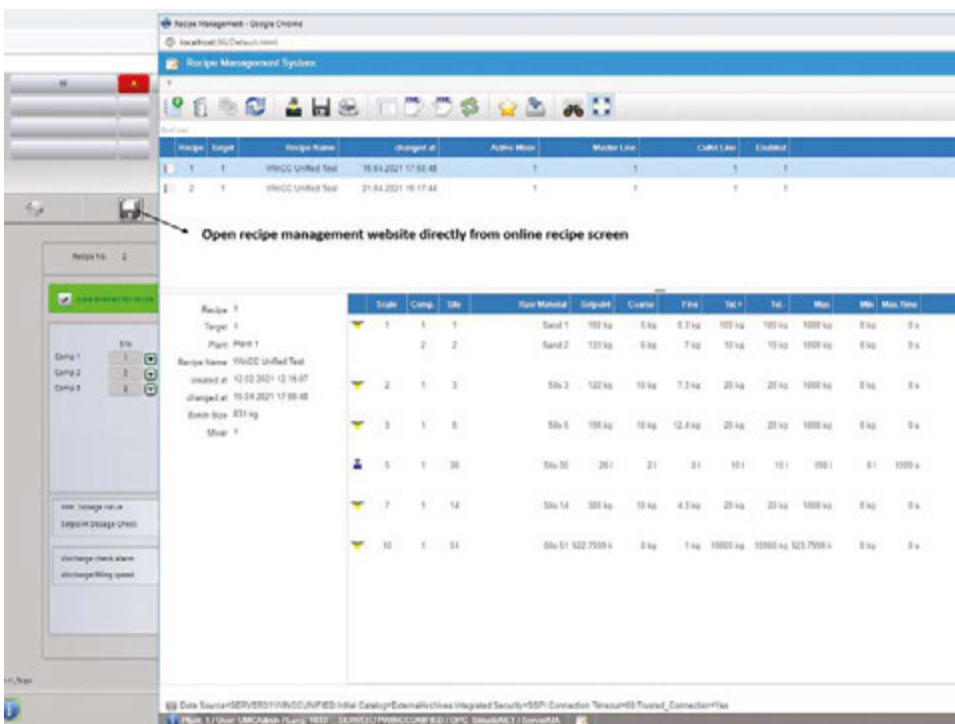
Batch plant overview.



Scale detail view with adjustment dialogue.



Online recipe.



Integration of the BatchSystem in WinCC Unified, e.g. the EME recipe management.

- Batch archiving and consumption analysis (MS SQL Server)
- ERP Interface (SAP, etc.)
- Universal data interfaces -> XML, XLS, CSV, PDF, EXCEL, RTF
- Interface to ext. software, such as batch calculation programs, etc.
- Data management
  - Synchronisation of all data
  - Automatic back-up of all system parameters, setpoints, settings, etc.
  - Detailed evaluation and diagnosis of batch production
  - Diagnosis and analysis of dosing accuracies by means of curve, standard deviation, etc.
- Integrated web server

**Virtual training with real results**

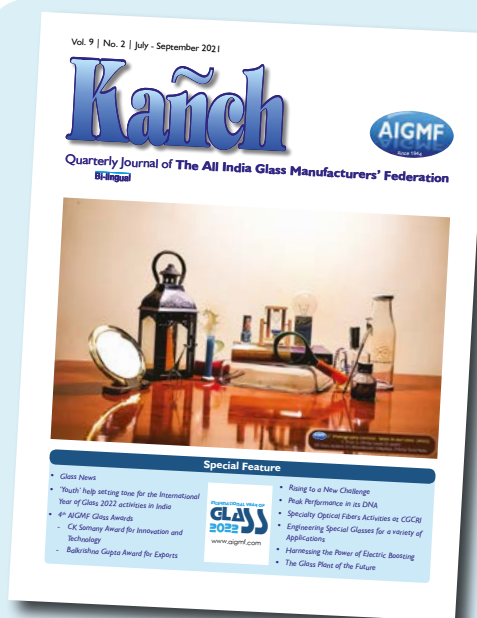
Simulations of the system and virtual commissioning have always been core components of an EME Batch House, and this also applies to the new system. Before production starts, customers can train staff on a digital twin that presents emergency scenarios without endangering the current system. After the commissioning of the plant, EME can offer a virtual system environment for training to continue. ●

**About the author:**

Roger Knüttel is Manager – Control Engineering Department at EME

**Further information:**

EME GmbH, Erkelenz, Germany  
 tel: +49 9352 507 202  
 email: woltz@eme.de / nstefan@web.de  
 web: www.eme.de



Quarterly Journal of Glass Industry, published and printed by Vinit Kapur on behalf of The All India Glass Manufacturers' Federation from 812, New Delhi House, 27 Barakhamba Road, New Delhi – 110001 and printed at New United Process, A-26, Ph-II, Naraina Industrial Area, New Delhi-110028

T: +91 11 2331 6507 E: info@aigmf.com

**Member Editorial Board:**

- K ANNAPURNA  
Senior Principal Scientist, Glass Division, CSIR-Central Glass & Ceramic Research Institute (CGCRI), Kolkata
- A K BANDYOPADHYAY  
Former Principal, Govt. College of Engineering & Ceramic Technology-GCECT, Kolkata
- VINAY KUMAR SINGH  
Prof. & HOD, Dept. of Ceramic, Indian Institute of Technology (Banaras Hindu University)
- K K SHARMA  
Advisor, Emmerge Glass Pvt. Ltd., Kotputli, Rajasthan

**Special Correspondent:** PREM MALHOTRA - Glacera Engineers, Pune **Editor:** MOHAN LALVANI

Complimentary copy for Members / Government Departments / NGO's and those connected with Glass Industry

Free online version at: [www.aigmf.com/kanch.php](http://www.aigmf.com/kanch.php)

**Charges for Print issue:**

- Indian Companies: ₹ 125 per copy  
Annual Subscription ₹ 450
- Foreign Companies: US\$ 25 per copy  
Annual Subscription US\$ 80

